

Adapter Kit "AZ3"

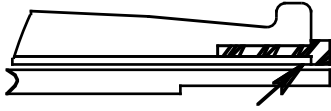
Thank you for purchasing the Throttlemeister™.

We believe it is the finest product and best value of its type on the market.

It was designed on a computer CAD system, then machined using the latest CNC machine tools.

To make it long-lasting and maintenance-free we used materials that won't corrode (Stainless Steel and Ampco Bronze) and sealed the inside with O-rings to keep dirt out so its smooth operation is maintained for years.

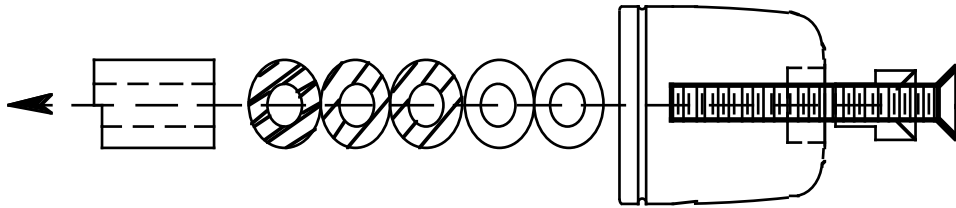
Installation Steps



1) Remove the Bar End Weight from throttle side. By removing mounting bolt in the end of the bar end weight.

2) Roll about 1" of the hand grip back from the end of the Throttle Tube. (NOTE if there are Grip Locating Projections molded on the end of the Throttle tube, we recommend that these be filed off to allow mounting of the Friction Sleeve over the Throttle Tube.) Push the Friction Sleeve over the Throttle Tube until it hits the inside lip (see arrow on section view to left).

3) Its time to install the Throttlemeister™ on the handle bars and make the initial adjustments.



4) Assemble the Throttlemeister™ and all the parts supplied as per the drawing .

5) Bolt the assembly into the end of the handlebar. Tighten the Bolt . Check the adjustment as described below. It may take several tries to get the right adjustment. When you have the correct adjustment be sure the mounting bolt is very tight (6-8 ft/lb). We also strongly recommend a drop or two of a medium strength thread lock compound (Loctite 242).

Adjustment Overview

The adjustments is made by determining the correct combination of shims and washers to use, so that the Throttlemeister holds the throttle tight when the it is in the "ON" position (same direction as opening the throttle), and the throttle works as normal when the Throttlemeister is in the "OFF" position (same direction as closing the throttle). We have included 3 thicknesses of adjustment washers. The thick washers are to make large adjustments , we have included several of these for each side. We have also included 2 different thicknesses of thin washers (2- .020 thick and 1 - .010 thick). to make finer adjustments on the Throttle Side.

Here's what too look for when making this adjustment.

When fully disengaged (Rotated to the stop in the same direction as closing the throttle.)

For safety it is very important that when disengaged the Throttlemeister™ has no effect on the movement of the throttle. The throttle should move freely and snap closed when you let go of the grip with no hesitation or drag.

When fully engaged (Rotated to the stop in the same direction as opening the throttle.)

There should be just enough pressure to keep the throttle from moving on its own, but still be easy to modulate manually. The Bronze Piston should engage the Friction Sleeve, Not the Hand Grip.

6) Remove the left side Bar End and mount the matching weight supplied. You can use some of the W055 washers to space the bar end out if it seems to be squishing the grip.



Installing the " OFF ON " Decal

7) We have included a decal sheet with 2 decals " OFF ON " and " Throttlemeister " The decals should be applied between the red stripe and the grip. Install the " OFF ON " decal on the Throttle side bar-end as shown. It should be installed so that when you are sitting on the motorcycle with the Throttlemeister™ disengaged you can only see the " OFF ", and when engaged you should only be able to see the " On " .

Marker Machine

5240 N 124 St.

Milwaukee WI 53225

Web Site: www.throttlemeister.com

Phone 414-464-6060

Fax 414-464-9423

Hours 8:00AM- 4:00 PM M-F Central

E-mail: cruising@throttlemeister.com

We, at Throttlemeister™ work hard to make your installation as trouble free as possible, but sometimes because of circumstances beyond our control and changes by the motorcycle manufacturers, problems do arise. If there is any difficulty with this assembly please call, fax or write so that we may help. Throttlemeister™ and or Marker Machine Inc. is not responsible for any damage caused by the installation.

Thanks for choosing Throttlemeister™

The Throttlemeister™ name is a registered trademark of Marker Machine Inc. Milwaukee, WI